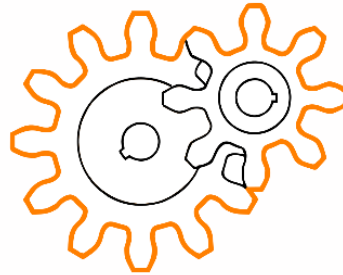




# Engenext Boundary Capture



## Step by Step Installation Guide & User Manual For ZWCAD

### Table of Contents

|          |                                                                         |           |
|----------|-------------------------------------------------------------------------|-----------|
| <b>1</b> | <b>Installation .....</b>                                               | <b>2</b>  |
| 1.1      | Step 1: Download the software and unzip the file .....                  | 2         |
| 1.2      | Step 2: Run setup as an administrator .....                             | 3         |
| 1.3      | Step 3: Setup wizard and license agreement .....                        | 4         |
| 1.4      | Step 4: Preferred ZWCAD version and installation folder selection ..... | 5         |
| 1.5      | Step 5: Installation and finish .....                                   | 6         |
| <b>2</b> | <b>Trial Period and How to use EGBoundary.....</b>                      | <b>7</b>  |
| 2.1      | Step 1: Trial period .....                                              | 7         |
| 2.2      | Step 2: How to use 'EGBoundary' Command .....                           | 8         |
| 2.3      | Step 3: How to use 'Settings' Command .....                             | 9         |
| 2.4      | Step 4: How to use 'EGABOUT' Command .....                              | 10        |
| <b>3</b> | <b>Procedure For License Activation .....</b>                           | <b>11</b> |
| 3.1      | Step 1: Navigating to license activation window.....                    | 11        |
| 3.2      | Step 2: License Activation.....                                         | 12        |
| 3.3      | Step 3: Important Information to Remember .....                         | 13        |



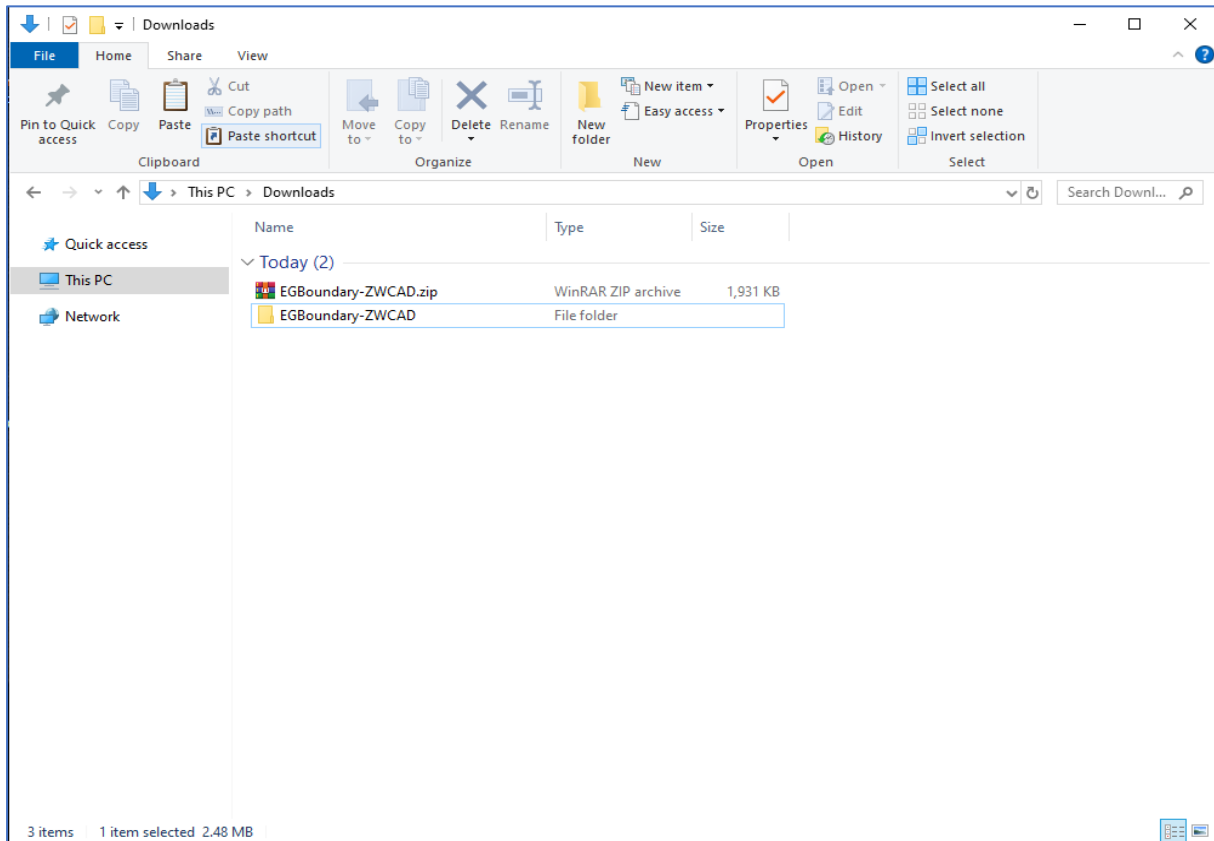
# 1 Installation

## 1.1 Step 1: Download the software and unzip the file

Download the **Engenext Boundary Capture For ZWCAD** from our official website: -

<https://engenext.com/pages/egboundary.html>

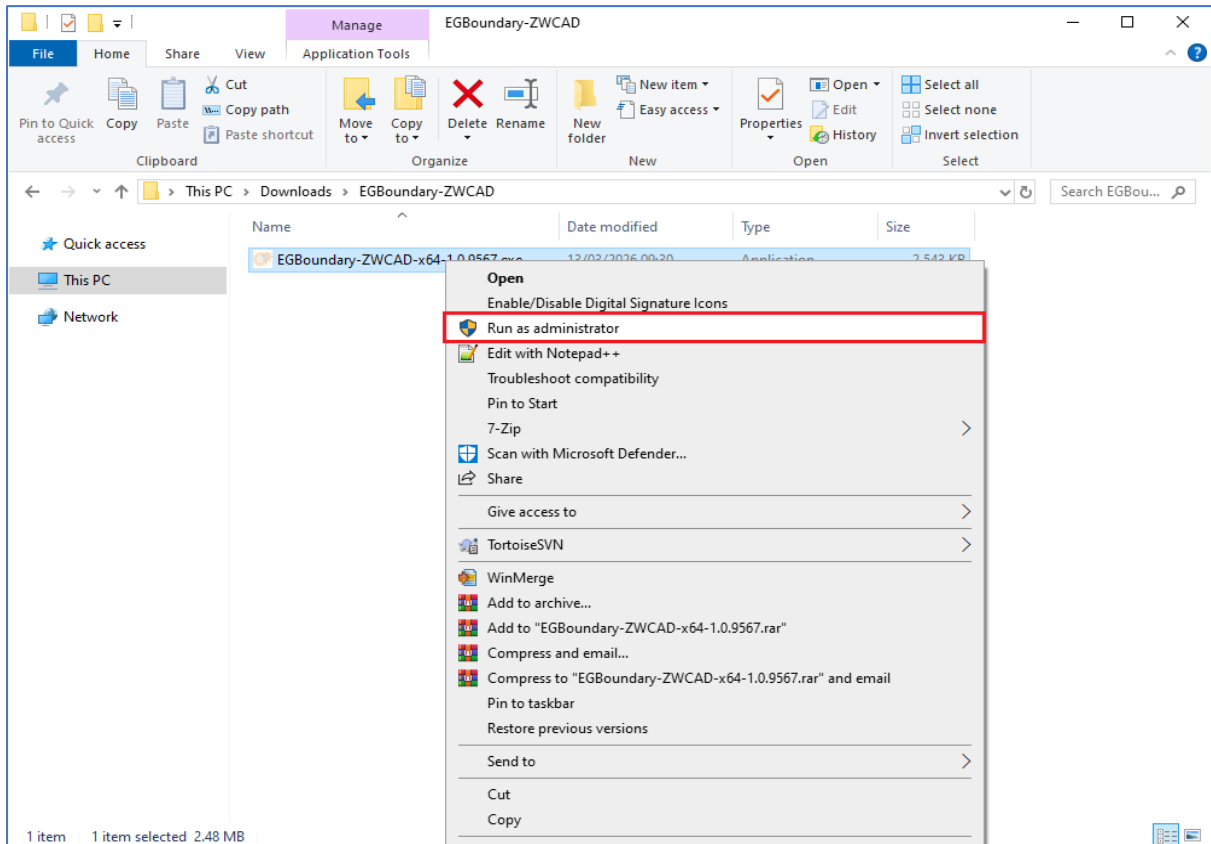
And unzip the file using any unzip tool. After unzipping the file, a folder will be created as shown below





## 1.2 Step 2: Run setup as an administrator

Open Folder EGBoundary-ZWCAD and run .exe file as an administrator



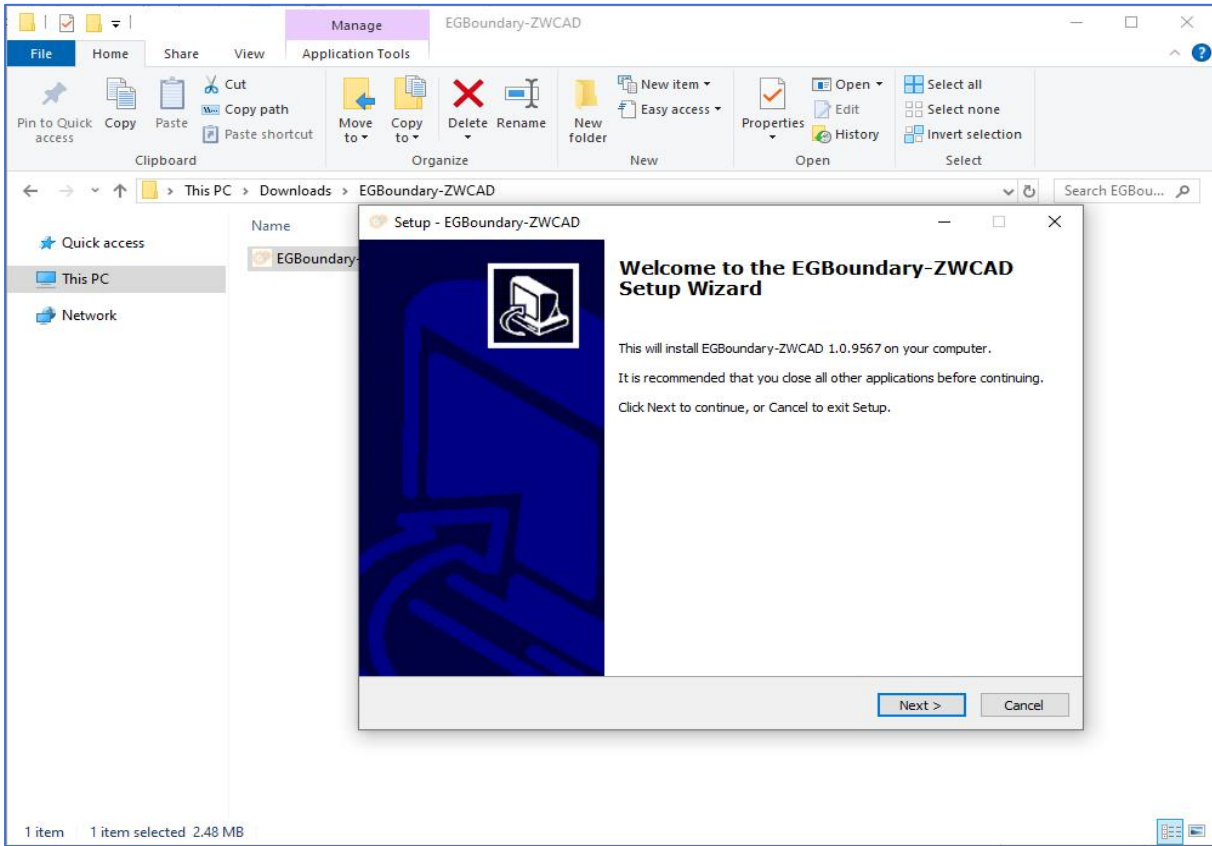
**Note: -**

If windows defender firewall protection dialogue appears saying unknown publisher select **More information --> Run anyway**

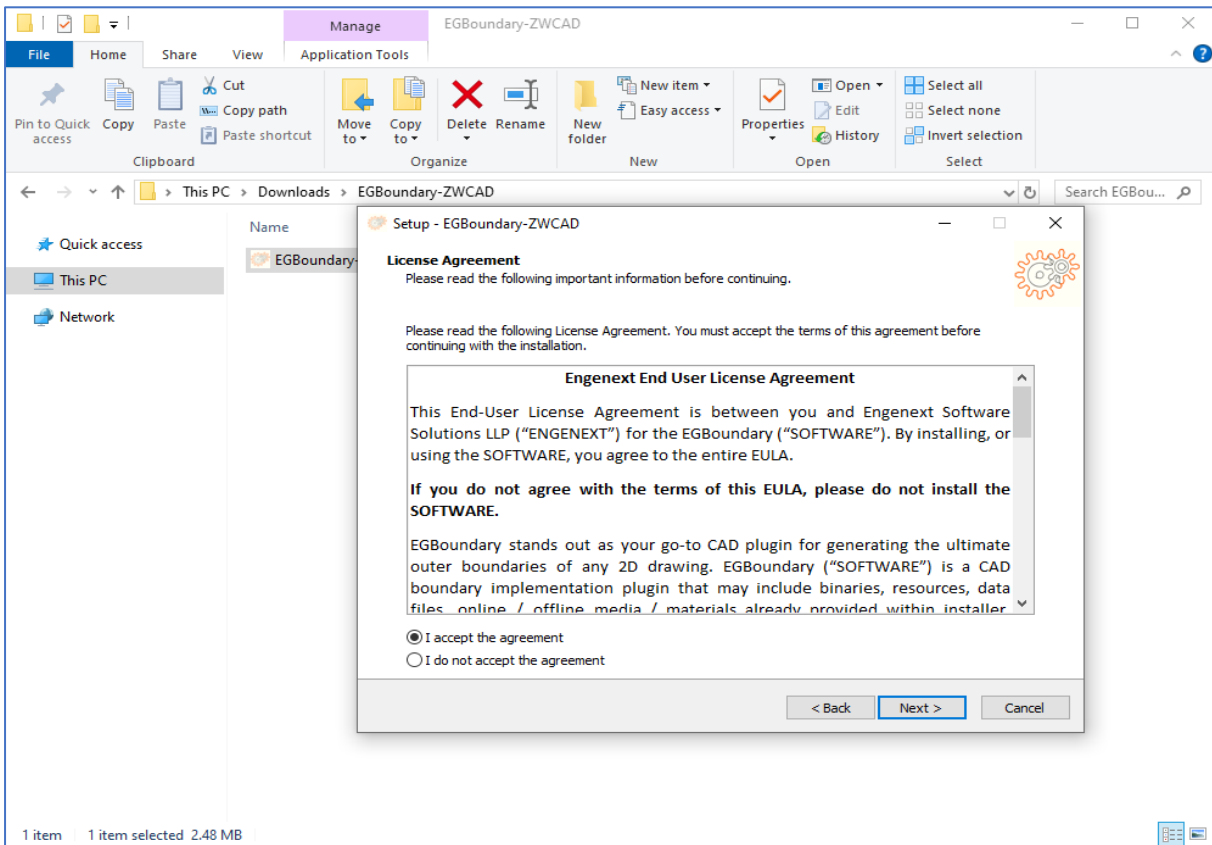


### 1.3 Step 3: Setup wizard and license agreement

A window saying ‘welcome to the EGBoundary-ZWCAD setup wizard’ will popup, Click on next.



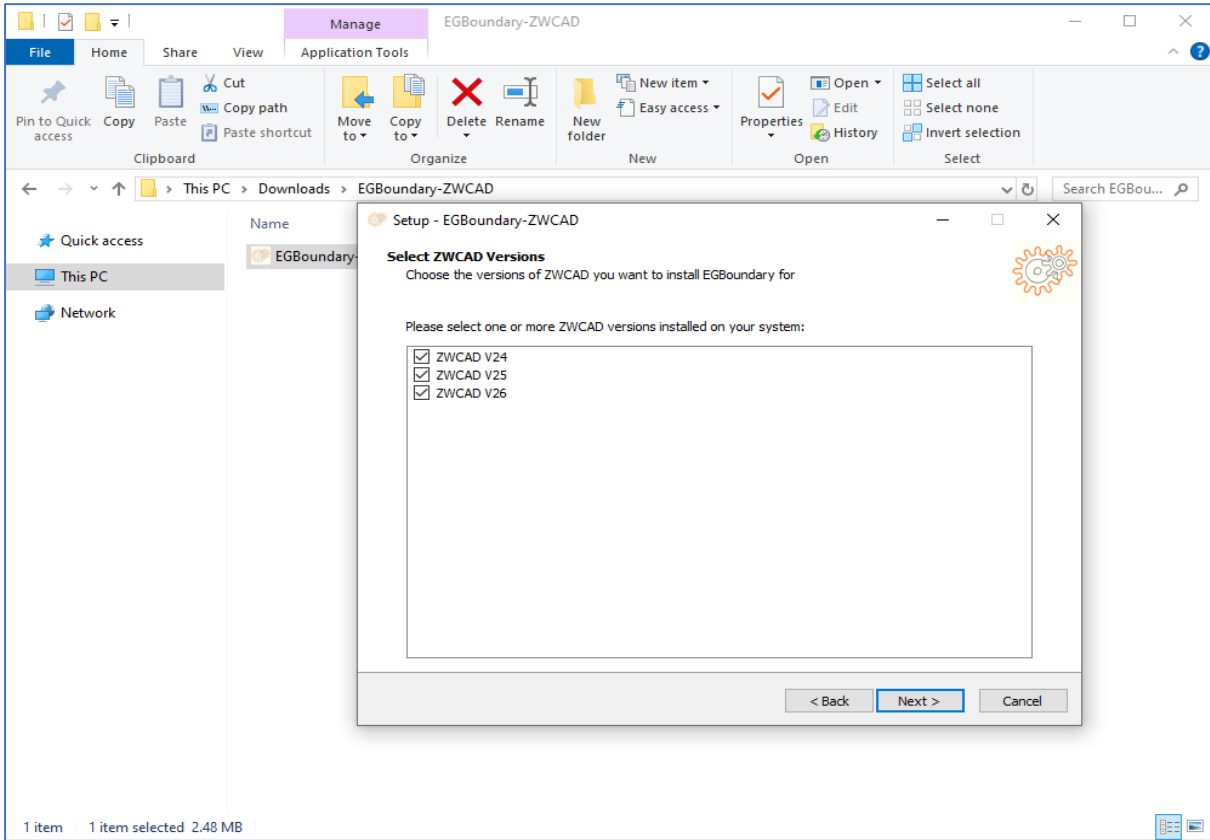
A license agreement window will pop up, after reading select ‘I accept the agreement’ and click next.



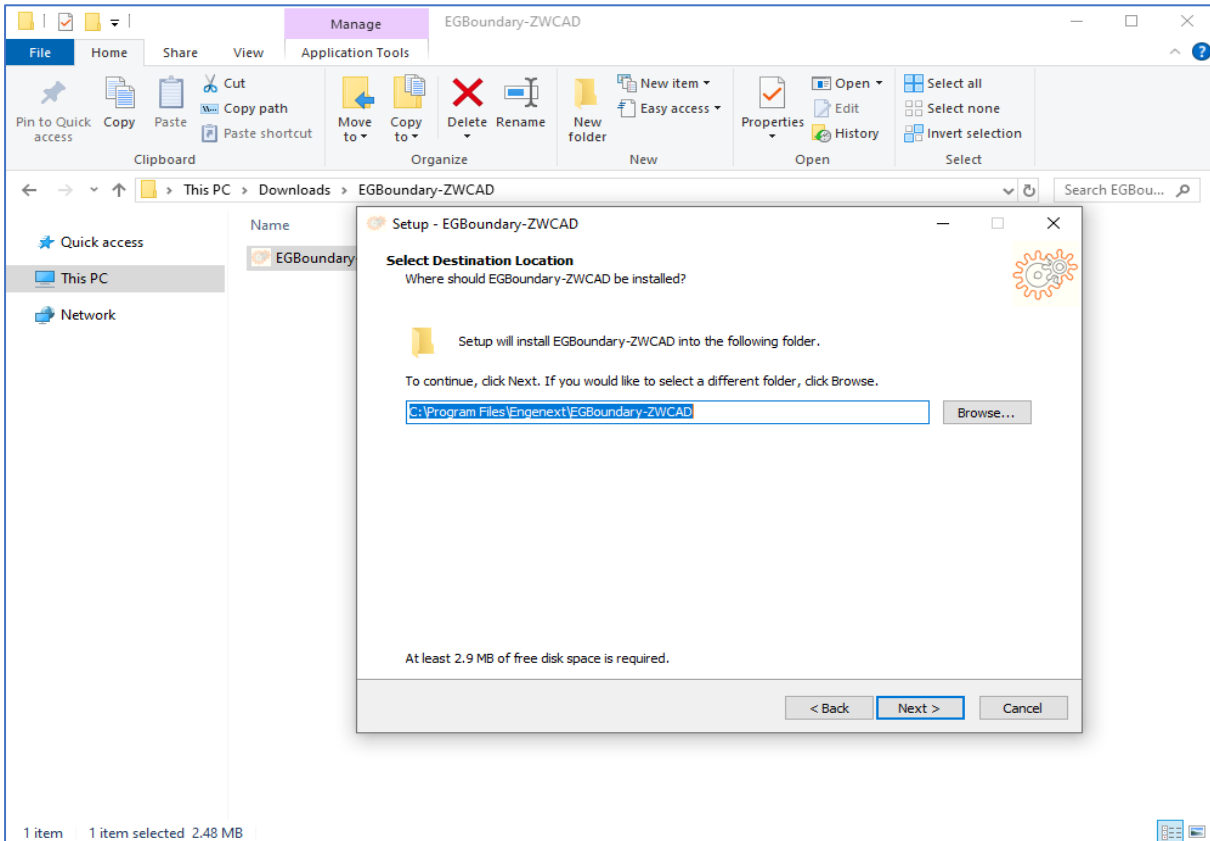


### 1.4 Step 4: Preferred ZWCAD version and installation folder selection

A window with list of installed versions of ZWCAD will appear, Select at least one ZWCAD version.



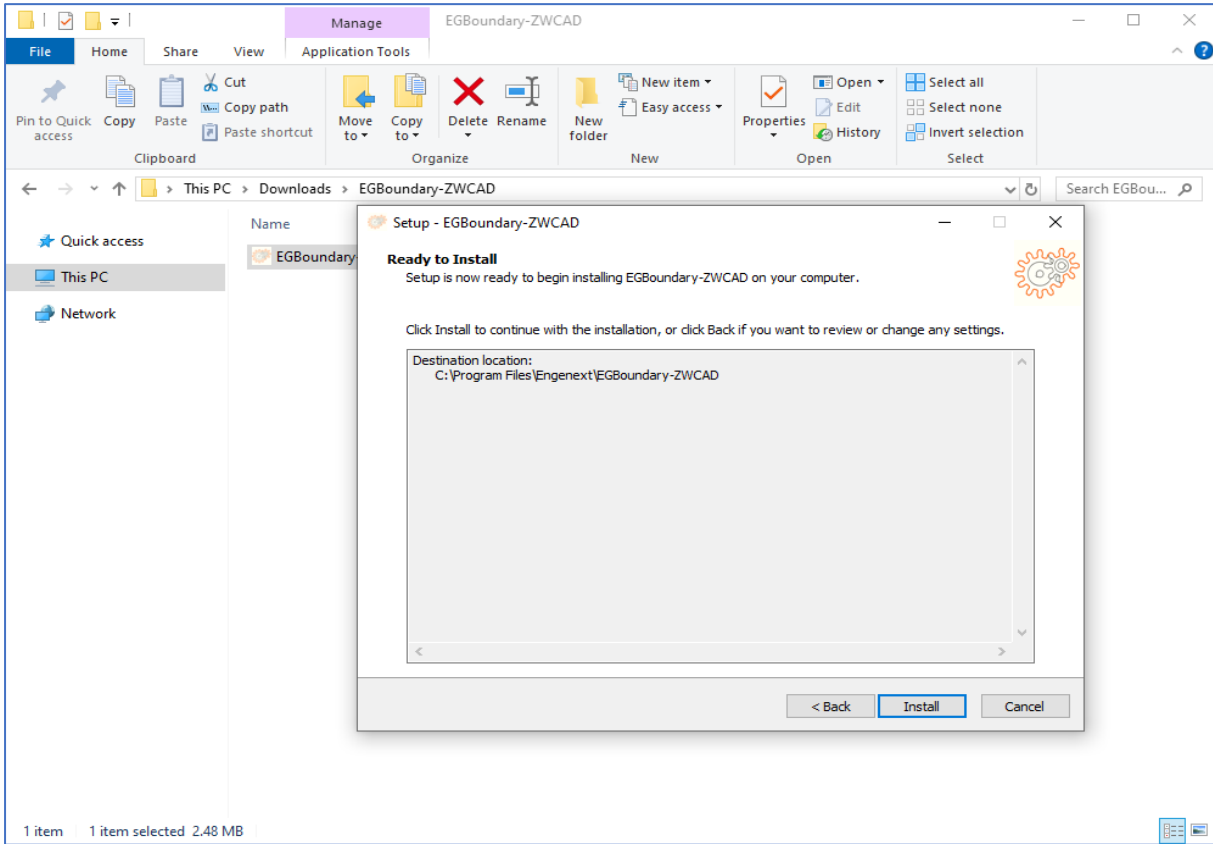
Select installation folder (recommended to keep default) for installing software and click next.



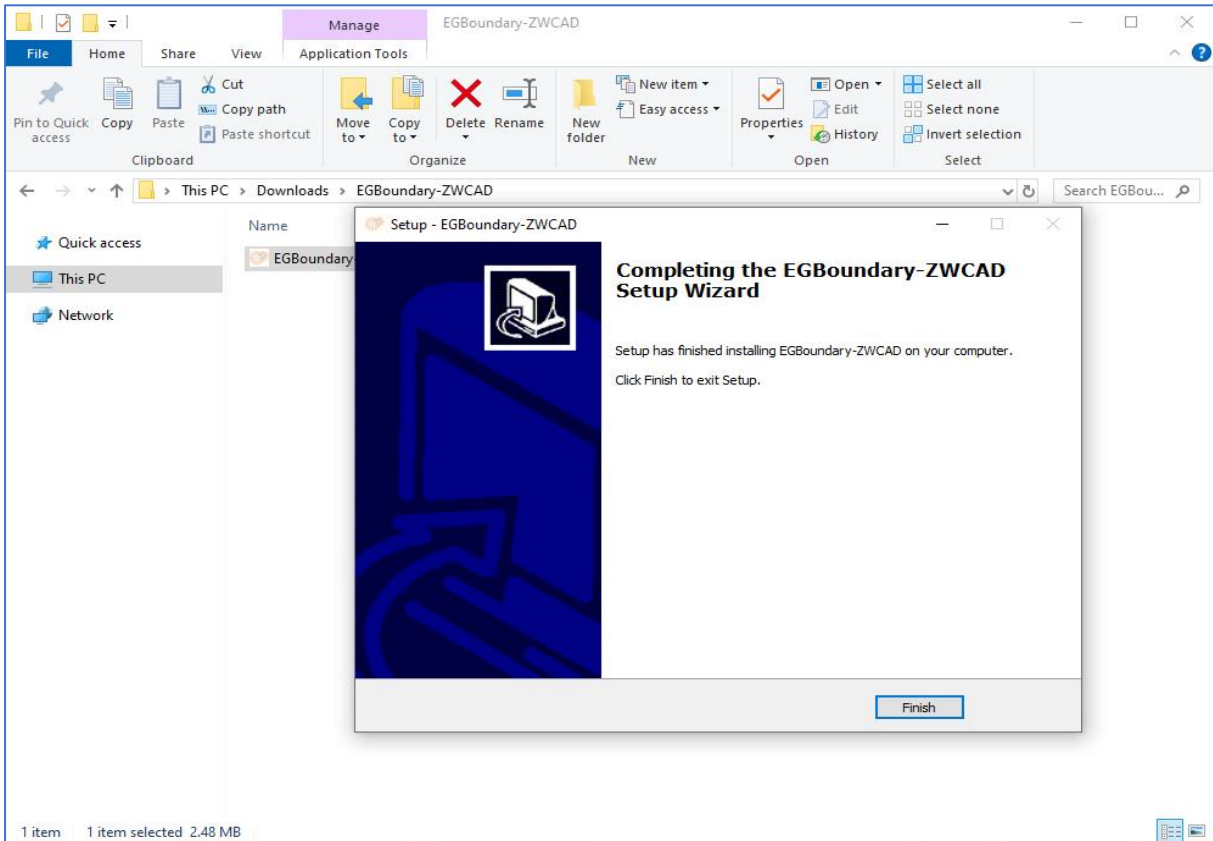


### 1.5 Step 5: Installation and finish

After selecting the preferences click **Install**, the setup will install **Boundary Capture** to specified path



Click **Finish** to complete the installation, the Boundary Capture is now ready to use from ZWCAD.



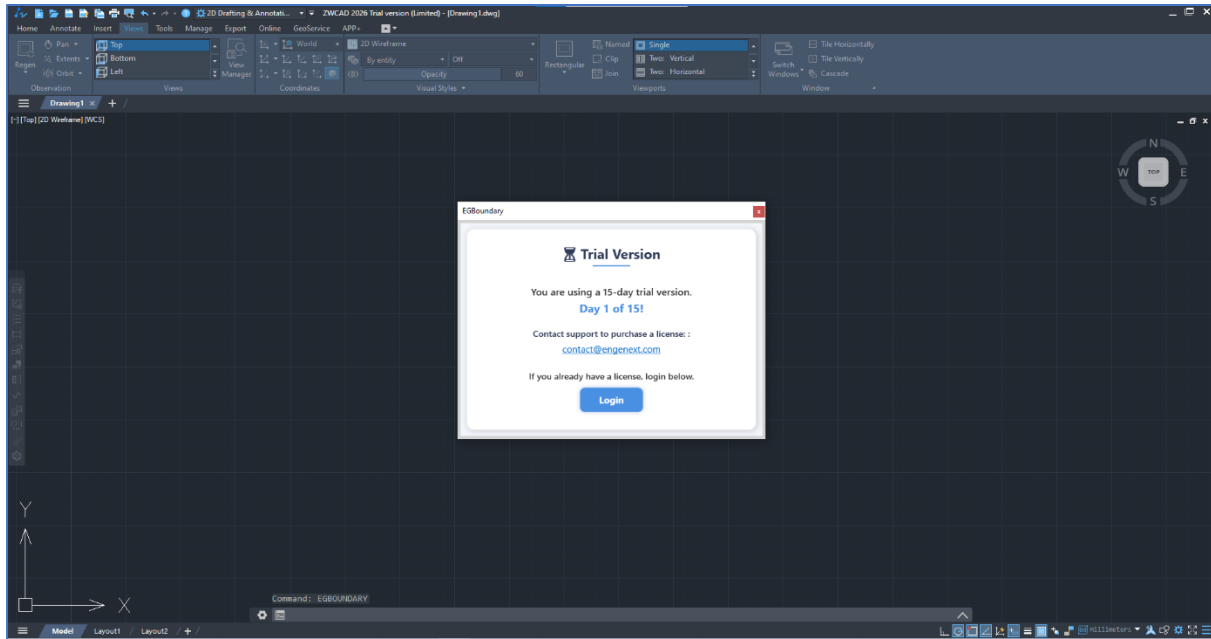


## 2 Trial Period and How to use EGBoundary

### 2.1 Step 1: Trial period

After successful installation of the EGBoundary software, start any of the ZWCAD version selected during installation and click new drawing.

Enter **'EGBOUNDARY'** (Case Insensitive) on the command line and press enter this will activate **free trial** of the software **for the 15 days from the date of installation.**



To purchase a license please reach out to [contact@engenext.com](mailto:contact@engenext.com)

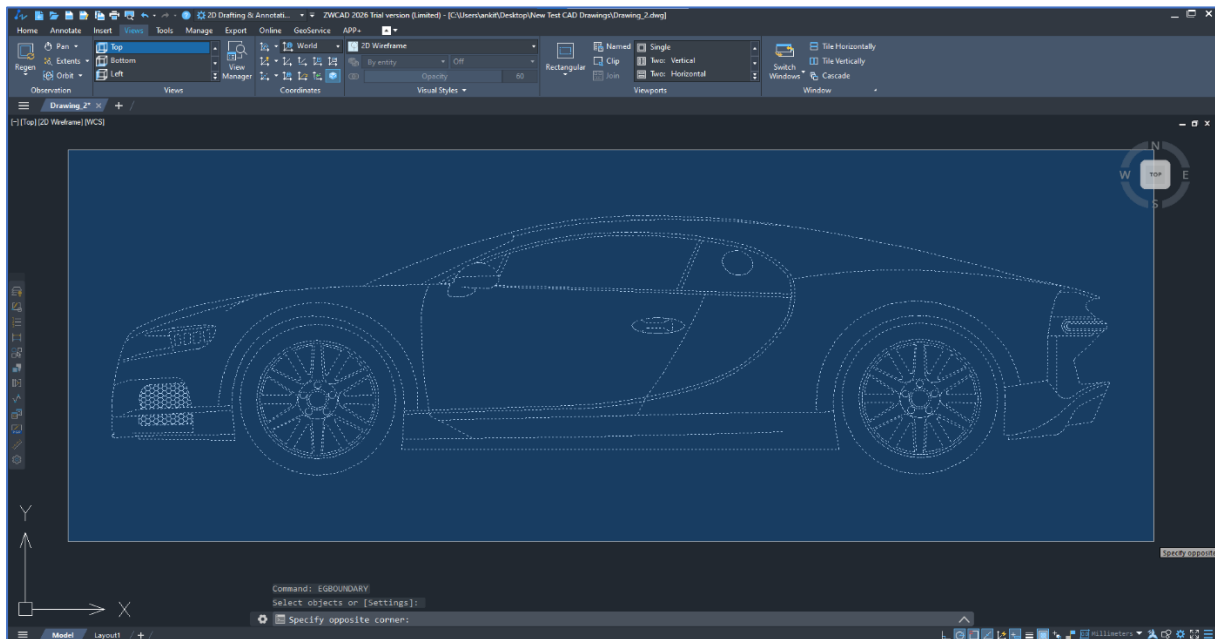
**Note:** The dialog box displayed above will pop up only once per day—specifically on the first launch of ZWCAD for that day—and only after the **'EGBOUNDARY'** command is entered.

Click **'Continue Trial'** to use the software in trial mode.

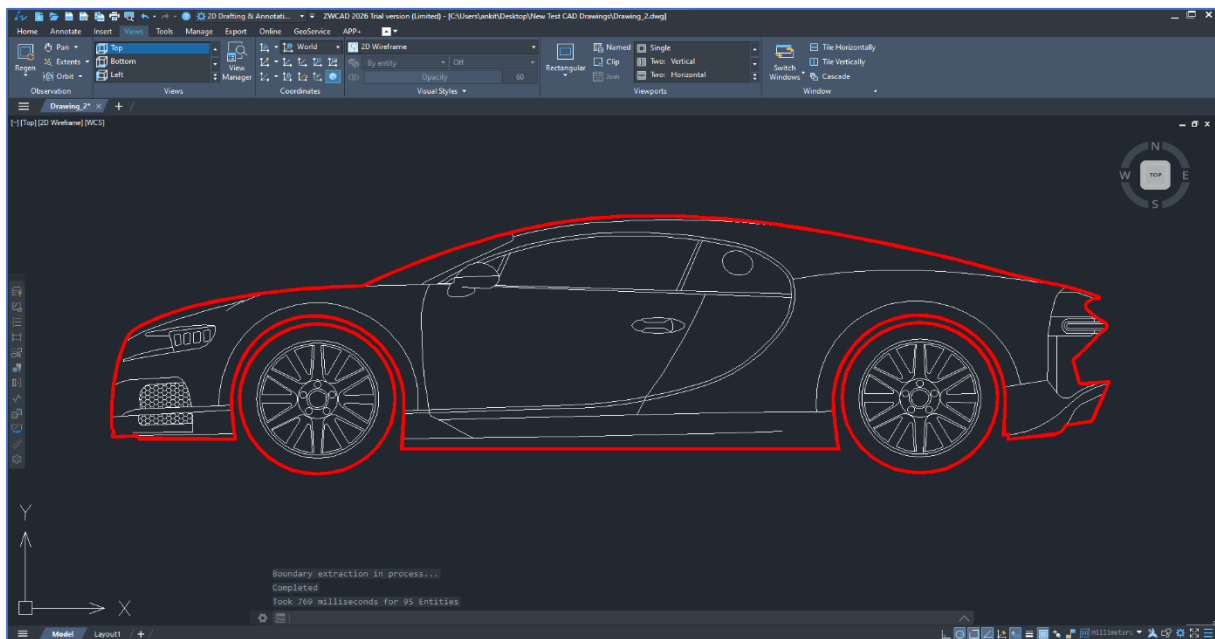


## 2.2 Step 2: How to use 'EGBoundary' Command

To use the **EGBoundary** command, open the drawing in which you want to create a boundary. Type **EGBOUNDARY** (case-insensitive) in the command line, then select the area—or the entire drawing.



Press enter to generate the boundary.



### Additional features: -

- The Boundary Capture program supports multiple island detection and can extract the boundaries of multiple entities within a single selection. The figure above demonstrates this functionality, where the body of the car and its tires are identified as separate boundary regions.
- It also features automatic tolerance calculation to enhance accuracy and reduce processing time.

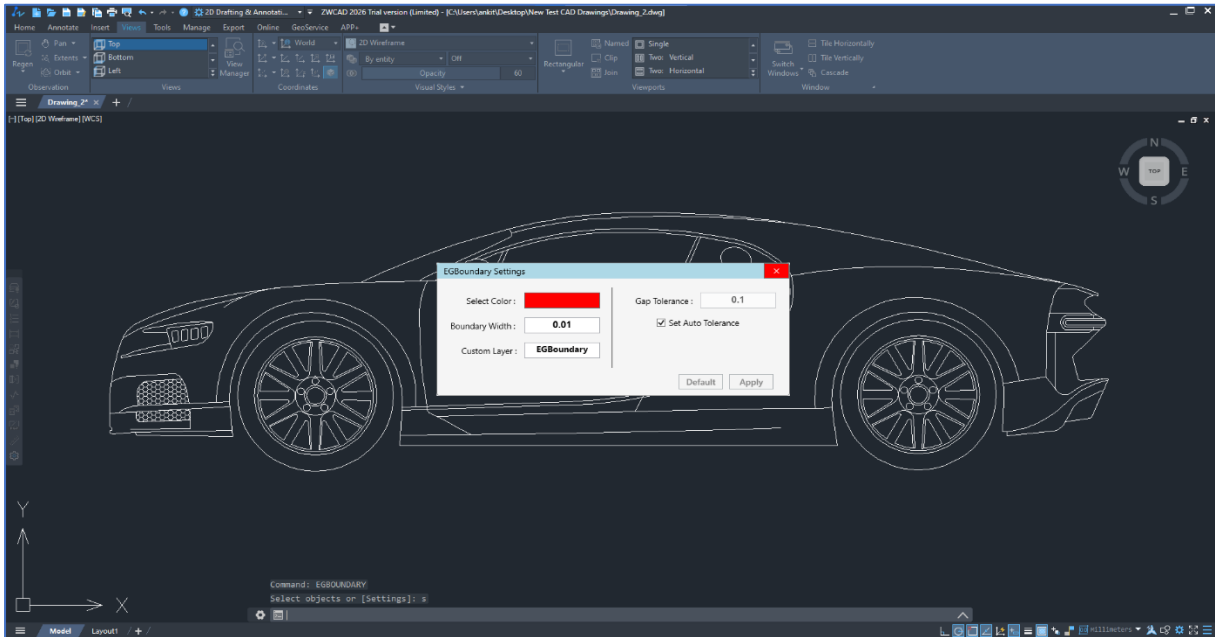


### 2.3 Step 3: How to use 'Settings' Command

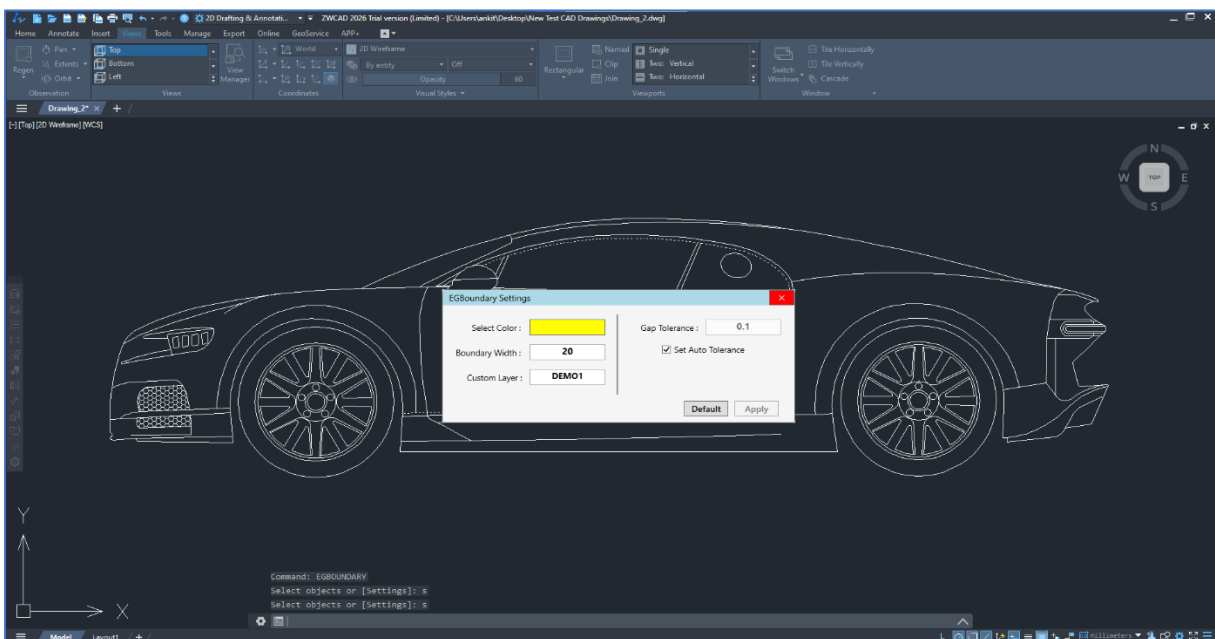
To help our users customize each boundary according to their preferences we have provided the 'Settings' command.

#### Steps:

1. To use 'Settings' command first type 'EGBOUNDARY' on the command line and press enter which will ask to select the objects.
2. Before or after selecting the objects type 'S' (Case Insensitive) on command line and press enter, a dialogue will appear on screen with multiple settings.

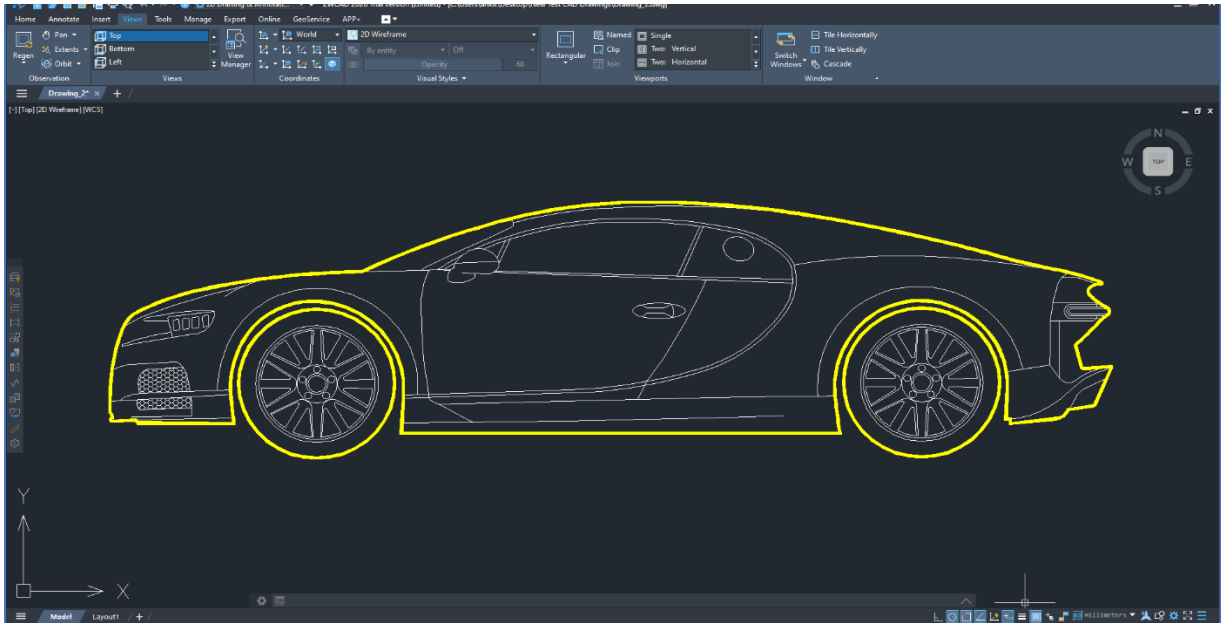


3. Settings include multiple customization options such as color selection, Boundary width selection, Custom layer name as well as manual gap tolerance (The automatic tolerance is checked by default uncheck the box to use manual tolerance).



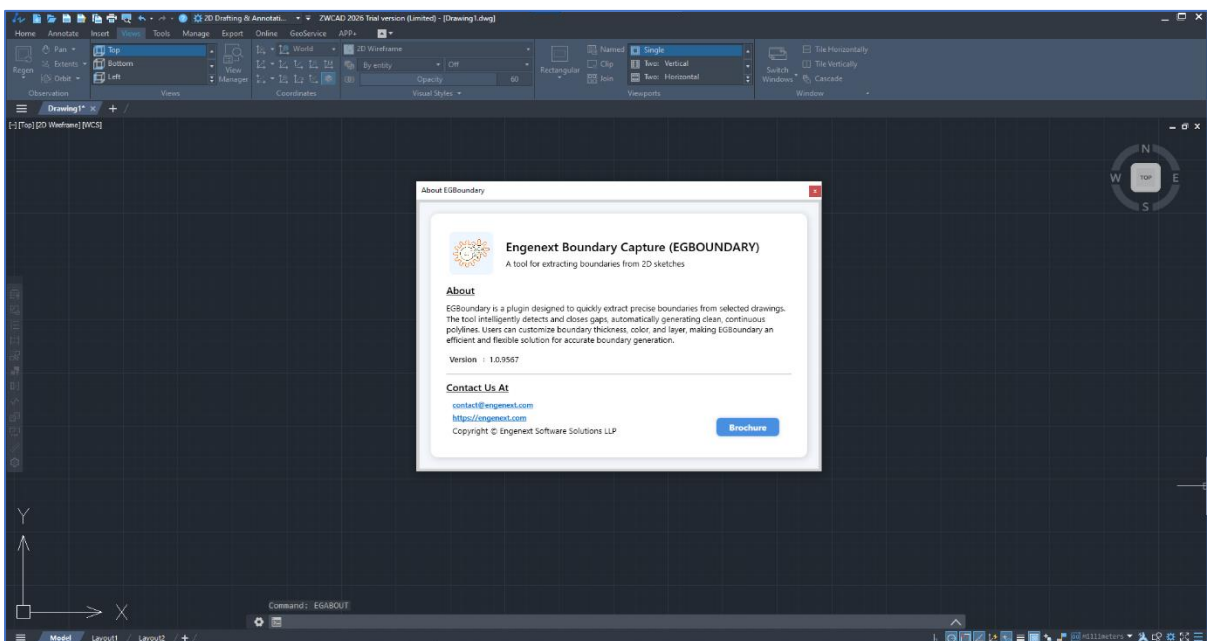


4. After adjusting the settings as per requirements click Apply to apply the changes, the Window will disappear then select the entities and press enter to calculate the boundary Using custom settings.



## 2.4 Step 4: How to use 'EGABOUT' Command

As the name suggest 'EGABOUT' command contains information about the programme, Version Number, contact details and brochure of the software for trial mode, the license information will be displayed in the same dialogue once license is activated. Just type 'EGABOUT' (Case Insensitive) to access the information.



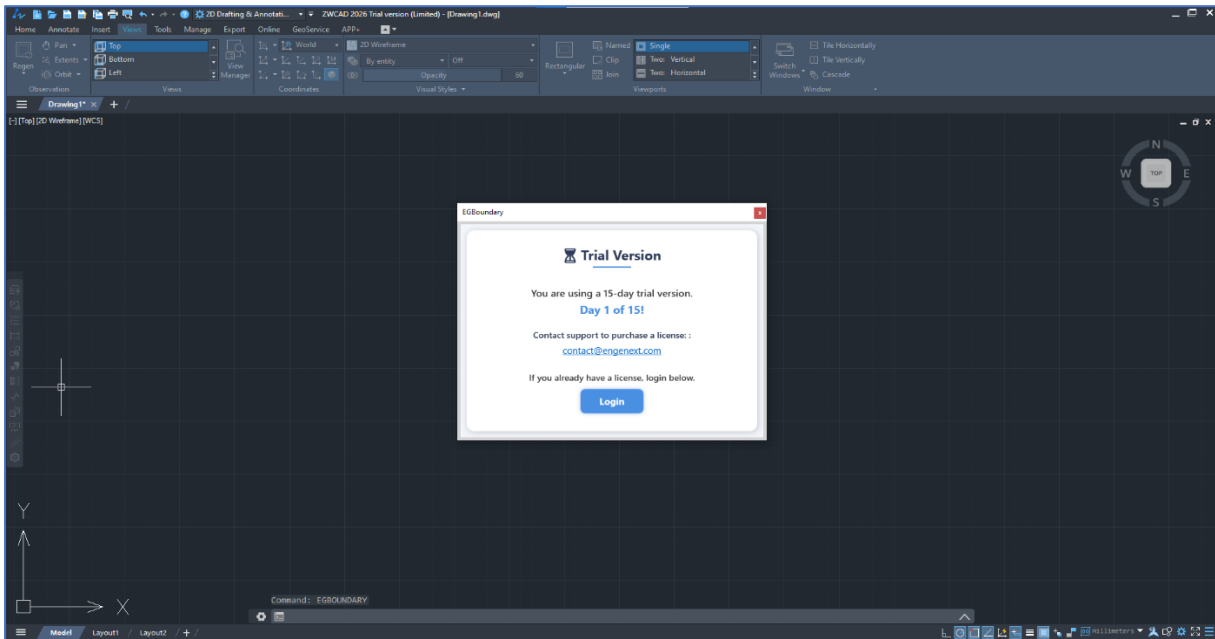


### 3 Procedure For License Activation

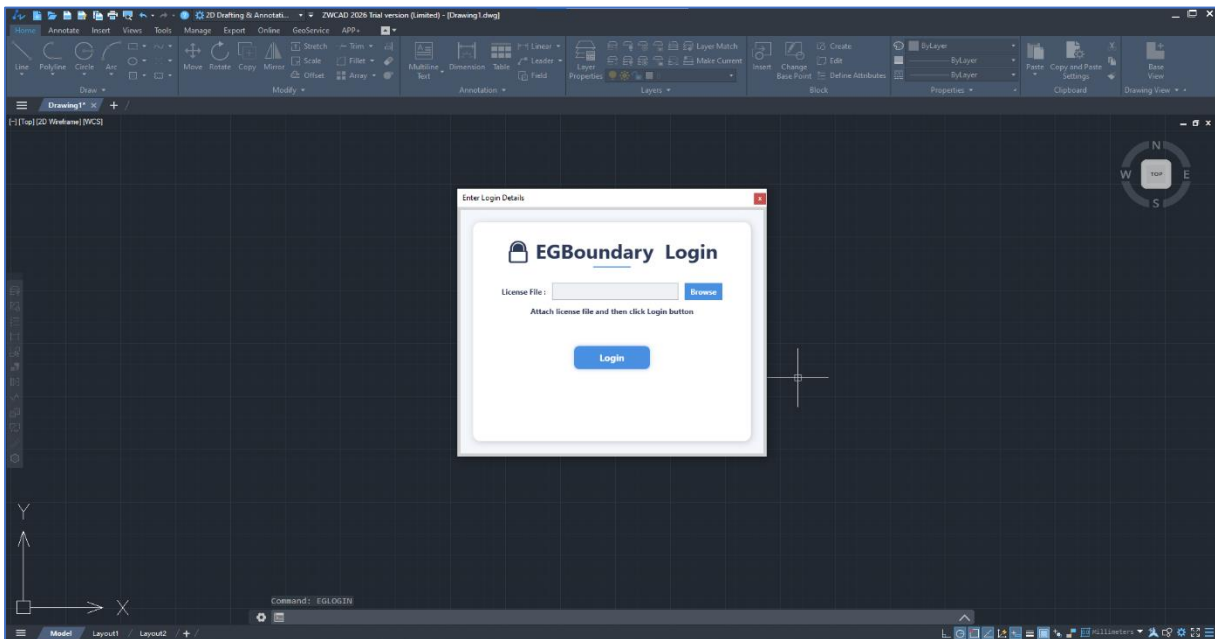
#### 3.1 Step 1: Navigating to license activation window

After purchasing the license, a file containing license key will be sent to mail address used while purchasing the license. Save the license file to any preferred location and follow procedure below to activate the license.

Start ZWCAD, click new drawing, enter ‘**EGBOUNDARY**’ on command line a dialogue box will appear as shown below



Click login button, EGBoundary Login dialogue will pop up asking for the license file.

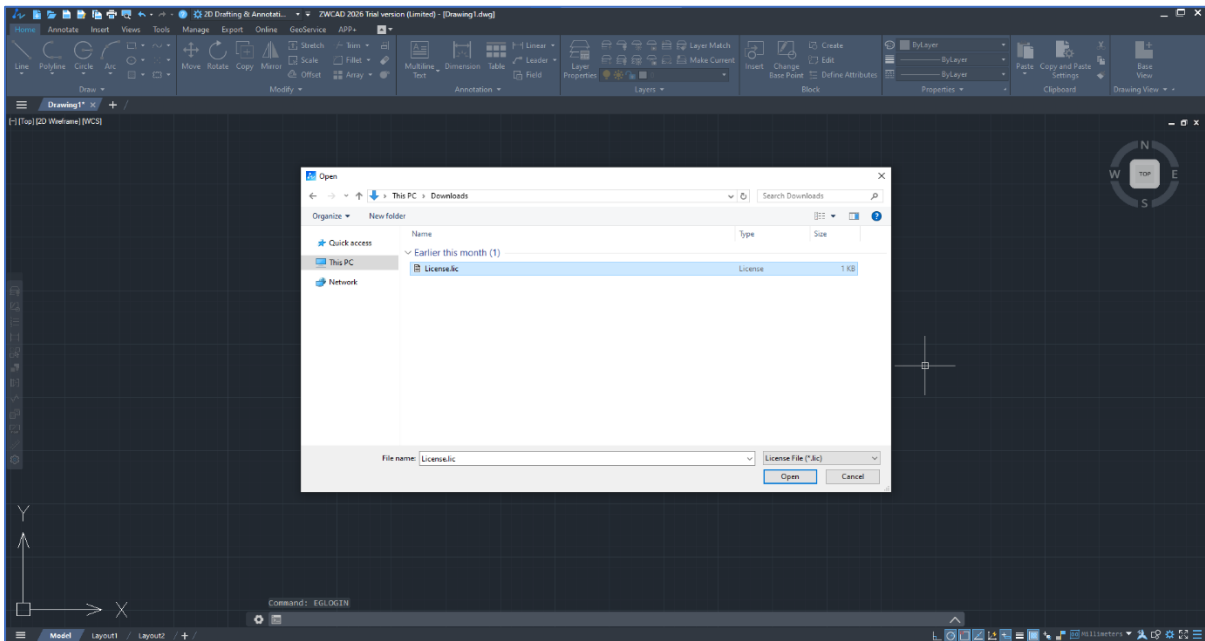


**Note:** -The trial version dialogue will be shown only once per day, if you miss out the login on this dialogue just enter ‘**EGLOGIN**’ (Case insensitive) on command line and the same EGBoundary Login dialogue will pop up

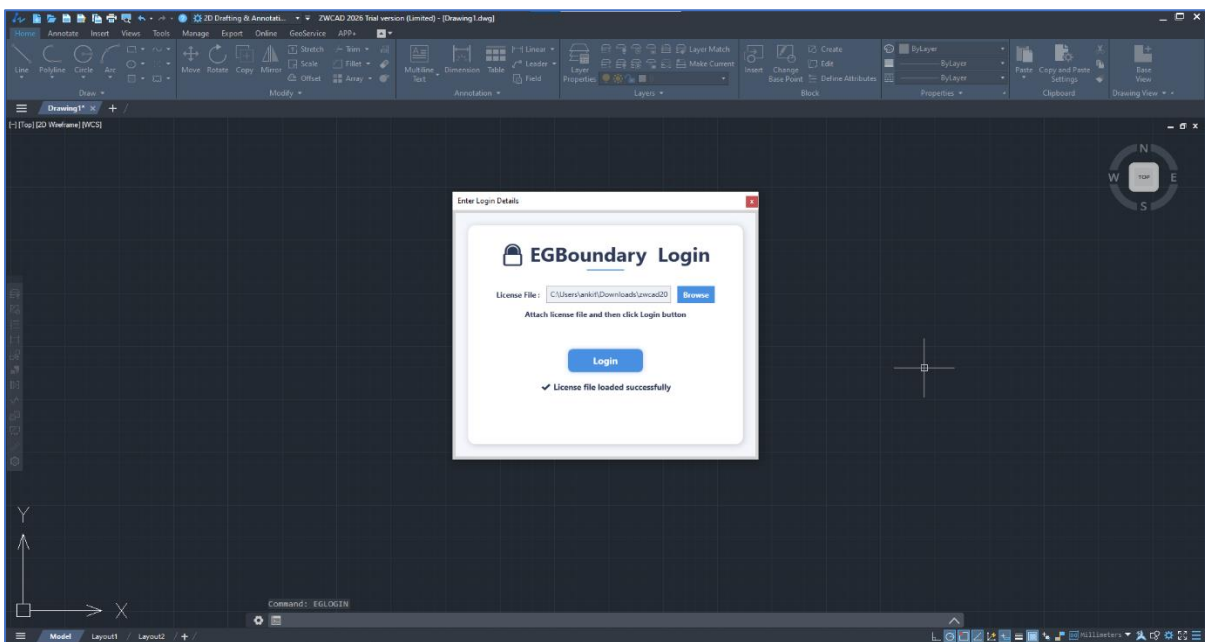


## 3.2 Step 2: License Activation

To activate the license, click **Browse** and choose the path of license file saved from the email we sent.

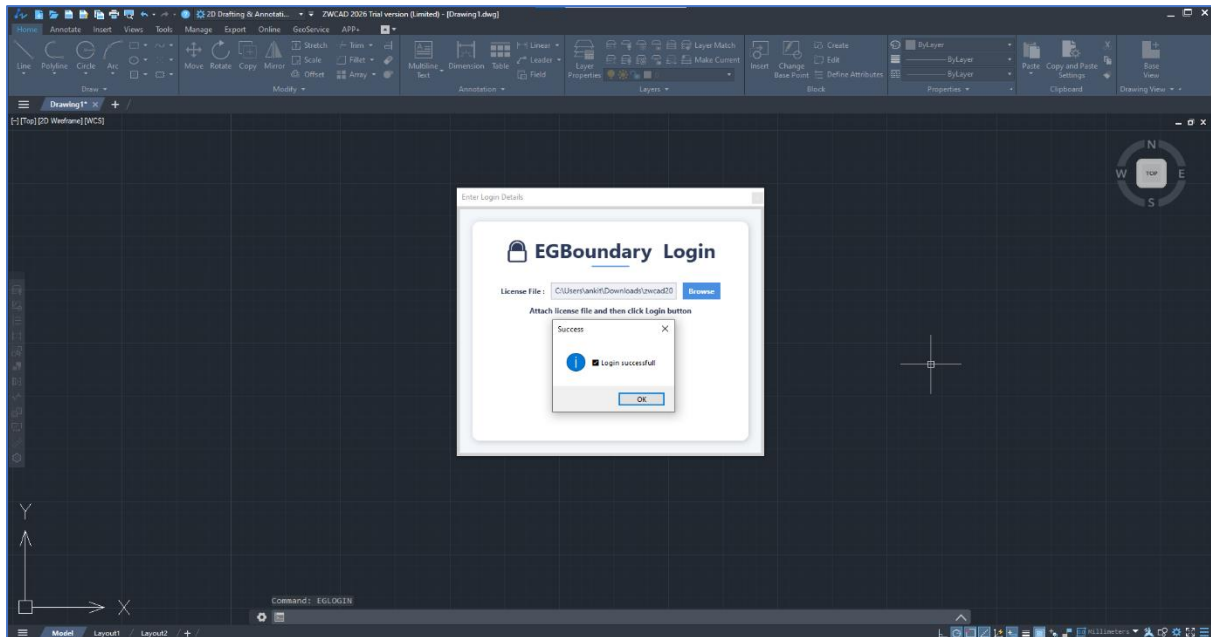


Once the correct license file is loaded it will show 'license file loaded successfully' as shown below.





Click Login, it will validate the license key and a dialogue saying “Login successful” will appear as shown in the image below



Click ok, the dialogue box and login window will disappear and the license activation procedure is now successfully completed.

### 3.3 Step 3: Important Information to Remember

When activating the license, please consider the following points:

- The license operates in **Node-Locked Mode**. Once it is registered to a specific device, it **cannot be transferred, revoked, or reassigned**.
- The license will remain valid **only while the host application is supported**. When ZWCAD discontinues support for a particular version, the Boundary Capture will automatically stop working on that version.
- In case of any **hardware or software failure** that makes device inoperable, please contact the support for assistance with license-related matters.
- For purchasing of the license and queries reach out to [contact@engenext.com](mailto:contact@engenext.com)
- For support and assistance with license-related or any other matters reach out to [support@engenext.com](mailto:support@engenext.com) .